



**Tinzyme Co., Limited**

Email: [sales@tinzyme.com](mailto:sales@tinzyme.com)

Website: [www.tinzyme.com](http://www.tinzyme.com)

Tel: +86-755-86134126

WhatsApp/Facebook/Twitter: +86-189-22896756

## FlashCut™ BbsI

Product Number: RE0511

---

### Shipping and Storage

-20°C.

### Components

Component	Specifications
FlashCut™ BbsI	30μL
10× CutOne™ Buffer	1mL
10× CutOne™ Color Buffer	1mL

### Description

FlashCut™ Rapid endonucleases are a series of genetically engineered restriction endonucleases that are suitable for rapid enzymatic cleavage of plasmid DNA, PCR products, or genomic DNA. All FlashCut™ Rapid endonucleases have excellent activity in both CutOne™ and CutOne™ Color Buffer, and can complete enzyme cleavage within 5-15 minutes. In addition, Baishimei dephosphorylation and ligation reagents are available on CutOne™ Buffer has 100% activity and supports one tube reaction, enhancing the experience of "enzyme digestion modification connection".

CutOne™ Color Buffer includes red and yellow tracer dyes, which can be directly used for gel electrophoresis. The migration rate of red dye of CutOne™ Color Buffer and 2500 bp double stranded DNA fragment in 1% agarose gel is similar; The migration rate of yellow dye and 10 bp double stranded DNA fragment in 1% agarose gel is similar.

### Suggested reaction conditions

1. 1 × CutOne™ Buffer solution.
2. Incubate at 37°C.
3. Prepare the reaction system according to the "DNA rapid enzyme digestion process".

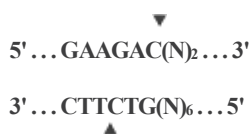
### Inactivation conditions


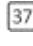


Cannot be thermally deactivated, please use phenol chloroform extraction or column purification.

### Quality control

1. Functional activity detection: At 37°C, in a 20μL universal CutOne™ reaction system, 1μL FlashCut™ BbsI can completely digest 1μg λ DNA within 15 minutes.
2. Ultra long incubation test: at 37°C, in 20 μL of universal CutOne™ In the reaction system, 1μL of FlashCut™ BbsI is added was co incubated with 1μg λ DNA for 3 hours, and no non-specific degradation of the substrate caused by other nuclease contamination or star activity was detected. Longer enzyme digestion may result in star activity.
3. Enzyme digestion ligation re digestion detection: At 37°C, use FlashCut™ BbsI with 10 times the enzyme amount digests DNA substrates, recovers enzyme cleavage products, and at 22°C, T4 DNA Ligase (Fast) can reconnect over 95% of the enzyme cleavage products. After recycling the connecting product again, more than 95% of the connecting product can be re cut using the same endonuclease.

### Icon annotation



1.  Rapid endonuclease can complete the reaction within 5-15 minutes.
2.  The optimal reaction temperature is 37°C.
3.  Inactivation condition: Incubate at 80°C for 20 minutes.
4.  3 hours of incubation did not show star activity, and longer enzyme digestion may result in star activity.

## Protocol

### 1. DNA rapid enzymatic digestion process

#### 1.1. Prepare the reaction system on ice according to the recommended sample addition sequence as follows:

	plasmid DNA	PCR products	Genomic DNA
ddH <sub>2</sub> O	15μL	16μL	30μL
10×CutOne™ Buffer or 10×CutOne™	2μL	3μL	5μL
Color Buffer			
Substrate DNA	2μL(up to 1μg)	10μL(up to~0.2μg)	10μL(5μg)
FlashCut™ BbsI	1μL	1μL	5μL
Total	20μL	30μL	50μL

This system is suitable for enzyme digestion of purified PCR products. The unpurified PCR product has a certain ionic strength, 10×CutOne™ The amount of buffer added can be appropriately reduced to 2μL. However, due to the simultaneous exonuclease activity of DNA polymerase, it can affect the cleavage products. Therefore, the following steps require cloning and other operations. It is recommended to purify the PCR products before enzyme cleavage.

- 1.2. Gently suck or tap the tube wall to mix well (without vortexing), then centrifuge instantly to collect hanging wall droplets.
- 1.3. Incubate at 37°C for 15 minutes (plasmid), or 15-30 minutes (PCR product), or 30-60 minutes (genomic DNA).
- 1.4. Incubate at 80°C for 20 minutes to inactivate the enzyme and stop the reaction (optional).
- 1.5. If using CutOne™ Color Buffer is used for enzyme digestion reaction, and the resulting product can be directly subjected to sample electrophoresis.

### 2. Double enzyme digestion or multi enzyme digestion

- 2.1. The dosage of each rapid endonuclease is 1μL, and the reaction system should be appropriately expanded as needed;
- 2.2. The total volume of all rapid endonucleases must not exceed 1/10 of the total reaction system;
- 2.3. If the optimal reaction temperatures for the several rapid endonucleases used are different, the enzyme with the lower optimal temperature should be used first for enzyme digestion, and then the enzyme with the higher optimal temperature should be added for enzyme digestion reaction at its optimal reaction temperature.

### 3. Expansion reaction system suitable for plasmids

DNA	1μg	2μg	3μg	4μg	5μg
FlashCut™ BbsI	1μL	2μL	3μL	4μL	5μL
10×CutOne™ Buffer or 10×CutOne™	1μL	2μL	3μL	4μL	5μL
Color Buffer					
Total	20μL	20μL	30μL	40μL	50μL

Note: If the total reaction system is greater than 20μL, the incubation time should be appropriately increased, and water bath, metal bath or sand bath should be used as much as possible.



## Tinzyme Co., Limited

Email: [sales@tinzyme.com](mailto:sales@tinzyme.com)

Website: [www.tinzyme.com](http://www.tinzyme.com)

Tel: +86-755-86134126

WhatsApp/Facebook/Twitter: +86-189-22896756

### The number of enzyme cleavage sites in different DNA

λDNA	ΦX174	pBR322	pUC57	pUC18/19	SV40	M13mp18/19	Adeno2
24	3	3	0	0	3	0	27

### The influence of methylation modification

Dam	Dcm	CpG	EcoKI	EcoBI
no effect	no effect	no effect	no effect	no effect

### Activity in different reaction buffers

Cut One™ Buffer	Thermo Scientific Fast Digest Buffer	NEB Cut Smart® Buffer	Takara Quick Cut™ Buffer
Reactivity ≤10%	100%	100%	100%

Note: The activity data comes from the detection under the restriction enzyme standard reaction system.

### The activity of DNA modifying enzymes in CutOne™ Buffer and CutOne™ Color Buffer

Alkaline Phosphatase (Fast)	100%
T4 DNA Ligase (Fast)	100%

Note: The activity data comes from the detection under standard reaction system, and T4 DNA Ligase (Fast) requires ATP as a cofactor.