

## Concanavalin A Magnetic Beads

Product Number: MB12

---

### Shipping and Storage

Sealed, 4 °C/24 months, no freezing, please mix thoroughly before use.

### Component

Component	Specifications	Concentration
concanavalin A Magnetic Beads	1mL	10 mg/mL
	5mL	10 mg/mL
	10mL	10 mg/mL

### Description

Our company provides Concanavalin A Magnetic Beads, which are covalently coupled with high-quality Concanavalin A (ConA) and superparamagnetic micro magnetic beads. In the presence of Ca<sup>2+</sup> and Mn<sup>2+</sup>, ConA has affinity for terminal  $\alpha$  - D-mannose and  $\alpha$  - D-glucose residues, and can quickly, efficiently, and specifically bind to glycosylated molecules such as glycoproteins, glycolipids, polysaccharides, etc. It can be used for purifying glycoproteins, capturing cells or nuclei. MagBeads® Knife bean protein A magnetic beads can also be used for chromatin analysis experiments, such as cell capture and fixation in nuclease targeted cleavage and release (CUT&RUN), targeted cleavage, and transposase technology (CUT&Tag).

### Features

1. Concentration: 10mg/mL
2. Particle size: approximately 1.0 $\mu$ m
3. Surface potential: approximately -20mV
4. ConA loading capacity: 90 $\mu$ g/1 mg magnetic beads

### Parameter

Scanning electron microscope:

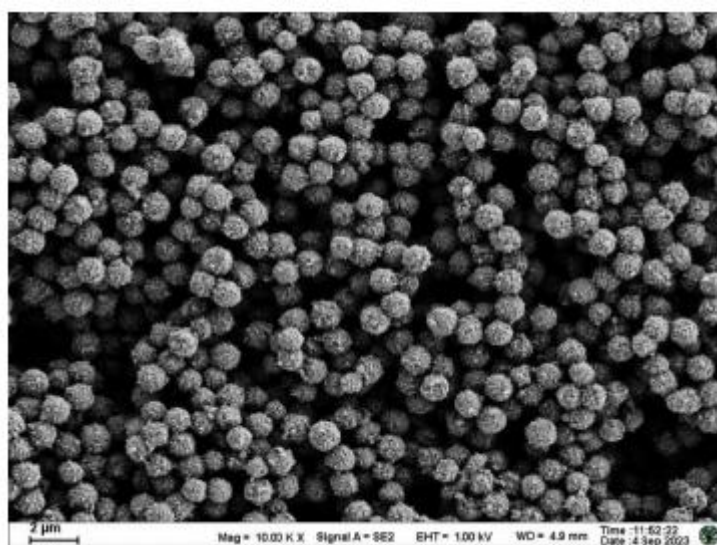


Figure. SEM image of Concanavalin A Magnetic Beads

### Note

1. Before using magnetic beads, they should be thoroughly mixed to prevent changes in the concentration of the beads and to

**For Research Use Only**



## **MEBEP TECH(HK) Co., Limited**

Email: [sales@mebep.com](mailto:sales@mebep.com) Website: [www.mebep.com](http://www.mebep.com)

Tel: +86-755-86134126 WhatsApp/Facebook/Twitter: +86-189-22896756

avoid prolonged ultrasonic damage to the surface of the beads;

2. Before using magnetic beads, please perform magnetic separation and clean 2-3 times with pure water or the buffer solution used;
3. During the use and storage of magnetic beads, freezing and thawing should be avoided.